



B R O C H U R E 2 0 1 8

LIKE LEGO FOR PIPE

Modular Pipe Clamp and Handrail Systems

Designed for simple, rapid assembly of tubular structures

H A N D R A I L

F I T T I N G S

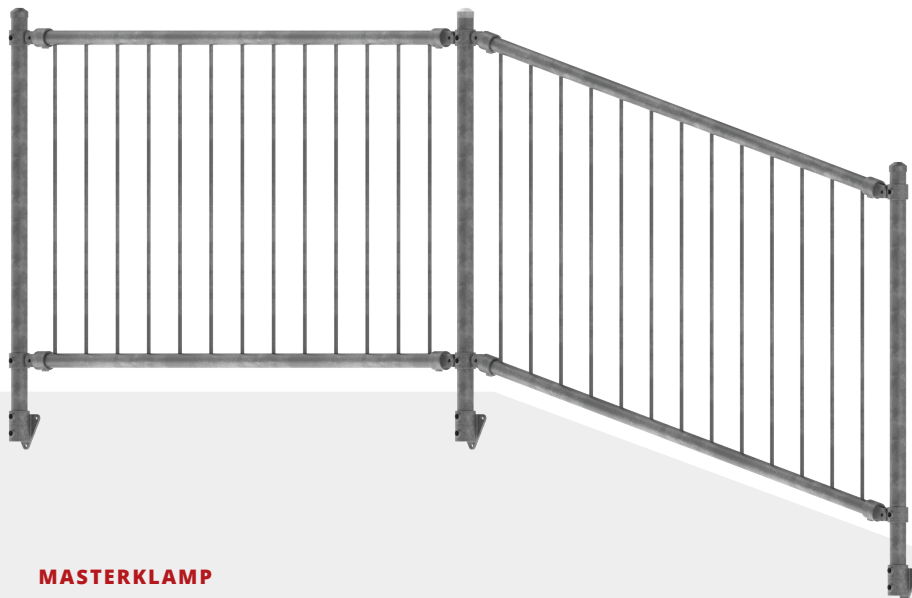
MasterKlamp's range of handrail fittings are designed for use on walkways, ramps and stairs. Engineered to create a continuous handrail surface these fittings meet AS1428.1:2009 and the requirements of the Disability Discrimination Act. They are made from hot dip galvanised steel and are designed to fit pipe 42OD with 3.2mm wall thickness (32NB with medium wall).

HOW TO ORDER :

1. Specify the configuration and colour
2. Specify the gradient: 0° flat surfaces, 0° - 30° undulations, 30° - 45° stairs
3. Specify the base flange based on the surface to which it will be installed
4. Specify the height of all rails

We will supply posts pre-assembled with fittings so you can simply add the rails. We can also supply custom PS1s and engineering drawings (POA).

< 2



MASTERKLAMP

BALUSTRADE PANEL 1.0MH

HANDRAIL CONFIGURATIONS



H10



H20



H30

BALUSTRADE CONFIGURATIONS



B10



B20



B30

GUARDRAIL CONFIGURATIONS



G10



G20



G30

MASTERKLAMP CODE GUIDE

Standard Fittings

1.02.42

Pipe outer diameter

Reducing Fittings for Handrail

1.02.42 / 48

Thru pipe outer diameter

Butt pipe outer diameter

PIPE SIZE CHART

Nominal Bore (mm)	15nb	20nb	25nb	32nb	40nb	50nb
Outside Diameter (mm)	21mm	27mm	34mm	42mm	48mm	60mm



SHORT TEE

Code	Pipe (NB)
1.02.27	20
1.02.34	25
1.02.42	32
1.02.42/48	32/40
1.02.48	40
1.02.48/34	40/25
1.02.48/42	40/32
1.02.60	50
1.02.60/48	50/40



SHORT TEE CAPPED

Code	Pipe (NB)
1.02.48/42C	40/32



SHORT TEE 0° - 11°

Code	Pipe (NB)
1.03.34	25
1.03.42	32
1.03.48	40



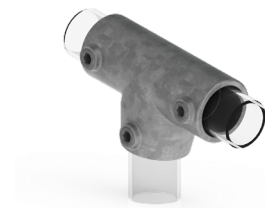
LONG TEE

Code	Pipe (NB)
1.04.27	20
1.04.34	25
1.04.42	32
1.04.42/48	32/40
1.04.48	40
1.04.60	50



INTERNAL SWIVEL TEE

Code	Pipe (NB)
1.05.34	25
1.05.42	32
1.05.48	40



LONG TEE 0° - 11°

Code	Pipe (NB)
1.06.34	25
1.06.42	32
1.06.48	40



ADJUSTABLE TEE 30° - 60°

Code	Pipe (NB)
1.07.34	25
1.07.42	32
1.07.42/48	32/40
1.07.48	40



CLAMP ON TEE

Code	Pipe (NB)
1.08.27	20
1.08.34	25
1.08.42	32
1.08.48	40



2 SOCKET CROSS

Code	Pipe (NB)
2.01.21	15
2.01.27	20
2.01.34	25
2.01.42	32
2.01.48	40
2.01.48/34	40/25
2.01.48/42	40/32
2.01.60	50



3-WAY MID CORNER CROSS

Code	Pipe (NB)
2.02.27	20
2.02.34	25
2.02.42	32
2.02.48	40
2.02.48/34	40/25
2.02.60	50



3-WAY TOP CORNER CROSS

Code	Pipe (NB)
2.03.27	20
2.03.34	25
2.03.42	32
2.03.48	40
2.03.48/42	40/32
2.03.60	50



2 SOCKET CROSS 30° - 45°

Code	Pipe (NB)
2.04.34	25
2.04.42	32
2.04.48	40
2.04.48/34	40/25
2.04.48/42	40/32



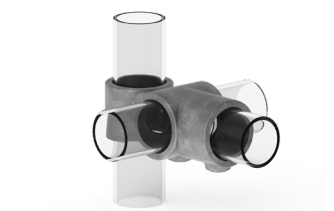
SIDE OUTLET CROSS

Code	Pipe (NB)
2.05.21	15
2.05.27	20
2.05.34	25
2.05.42	32
2.05.48	40
2.05.60	50



4 SOCKET CROSS

Code	Pipe (NB)
2.06.21	20
2.06.27	25
2.06.34	32
2.06.42	40
2.06.48	40/25



COMBINATION TEE/CROSS

Code	Pipe (NB)
2.07.27	20
2.07.34	25
2.07.42	32
2.07.48	40



CROSSOVER 90°

Code	Pipe (NB)
2.08.27	20
2.08.34	25
2.08.42	32
2.08.48	40
2.08.48/34	40/25
2.08.48/42	40/32
2.08.60	50
2.08.60/48	50/40



CLAMP ON CROSSOVER 90°

Code	Pipe (NB)
2.09.34	25
2.09.42	32
2.09.48	40



ADJUSTABLE SWIVEL CROSS

Code	Pipe (NB)
2.10.34	25
2.10.42	32
2.10.48	40
2.10.48/42	40/32
2.10.60	50



2 SOCKET CROSS 0° - 11°

Code	Pipe (NB)
2.11.34	25
2.11.42	32
2.11.48	40



ELBOW 90°

Code	Pipe (NB)
3.01.21	15
3.01.27	20
3.01.34	25
3.01.42	32
3.01.48	40
3.01.60	50



ELBOW 79° - 101°

Code	Pipe (NB)
3.02.34	25
3.02.42	32
3.02.48	40



ELBOW 30° - 60°

Code	Pipe (NB)
3.03.34	25
3.03.42	32
3.03.48	40



WALL FLANGE

Code	Pipe (NB)
4.01.27	20
4.01.34	25
4.01.42	32
4.01.48	40
4.01.60	50



RAILING BASE FLANGE

Code	Pipe (NB)
4.02.27	20
4.02.34	25
4.02.42	32
4.02.48	40
4.02.60	50



**HORIZONTAL BASE
RAILING SUPPORT**

Code	Pipe (NB)
4.03.34	25
4.03.42	32
4.03.48	40



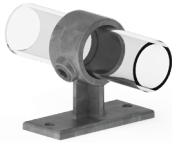
**VERTICAL BASE RAILING
SUPPORT**

Code	Pipe (NB)
4.04.34	25
4.04.42	32
4.04.48	40



RAILING BASE FLANGE 0° - 11°

Code	Pipe (NB)
4.05.34	25
4.05.42	32
4.05.48	40



HANDRAIL SUPPORT

Code	Pipe (NB)
4.06.27	20
4.06.34	25
4.06.42	32
4.06.48	40



**RAILING BASE
FLANGE 45° - 60°**

Code	Pipe (NB)
4.07.48	40



**RAILING BASE WITH
TOEBOARD SUPPORT**

Code	Pipe (NB)
4.08.48	40



SIDE BASE RAILING SUPPORT

Code	Pipe (NB)
4.09.48	40



BASE PLATE

Code	Pipe (NB)
4.10.UNI	Universal



SWIVEL BASE

Code	Pipe (NB)
4.11.27	20
4.11.34	25
4.11.42	32
4.11.48	40
4.11.60	40/25



SIDE PALM

Code	Pipe (NB)
4.13.34	25
4.13.42	32
4.13.48	40



GROUND SOCKET

Code	Pipe (NB)
4.18.34	25
4.18.42	32
4.18.48	40



SINGLE COLLAR PLATE

Code	Pipe (NB)
4.20.34	25
4.20.42	32
4.20.48	40



DOUBLE COLLAR PLATE

Code	Pipe (NB)
4.21.48	40



SINGLE SWIVEL

Code	Pipe (NB)
5.01.27	20
5.01.34	25
5.01.42	32
5.01.48	40



MALE DOUBLE SWIVEL

Code	Pipe (NB)
5.02.34	25
5.02.42	32
5.02.48	40



MALE CORNER SWIVEL

Code	Pipe (NB)
5.03.34	25
5.03.42	32
5.03.48	40



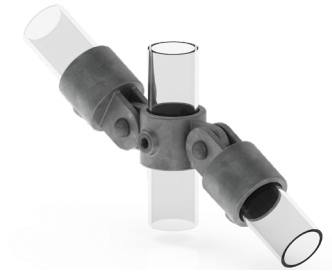
FEMALE SINGLE SWIVEL

Code	Pipe (NB)
5.09.27	20
5.09.34	25
5.09.42	32
5.09.48	40
5.09.60	50



SINGLE SWIVEL COMBO

Code	Pipe (NB)
5.11.27	20
5.11.34	25
5.11.42	32
5.11.48	40



DOUBLE SWIVEL COMBO

Code	Pipe (NB)
5.12.34	25
5.12.42	32
5.12.48	40



CORNER SWIVEL COMBO

Code	Pipe (NB)
5.13.34	25
5.13.42	32
5.13.48	40



HANDRAIL SUPPORT

Code	Pipe (NB)
6.01.27	20
6.01.34	25
6.01.42	32
6.01.48	40
6.01.60	50



INTERNAL COUPLING

Code	Pipe (NB)
6.03.34	25
6.03.42	32
6.03.48	40



HOOK

Code	Pipe (NB)
6.04.34	25
6.04.42	32
6.04.48	40



COLLAR

Code	Pipe (NB)
6.06.34	25
6.06.42	32
6.06.48	40



FEMALE GATE HINGE

Code	Pipe (NB)
6.08.34	25
6.08.42	32
6.08.48	40



MALE GATE HINGE

Code	Pipe (NB)
6.09.34	25
6.09.42	32
6.09.48	40

HANDRAIL

FITTINGS



RAIL SADDLE

Code	Pipe (NB)
A.7.07.UNI	Universal



INTERNAL ELBOW

Code	Pipe (NB)
A.7.03.42	32



GUARDRAIL BENT END

Code	Pipe (NB)
MK-BEND-42	32

**Notes : made to order straight or raking*



SWIVEL SUPPORT SADDLE

Code	Pipe (NB)
A.7.02.UNI	Universal



WALL SUPPORT SADDLE

Code	Pipe (NB)
A.7.09.42	32



BALUSTRADE PANEL

Code	Pipe (NB)
MK-BAL	32

**Notes : 1.625mW x 0.9mH - HDG Pipe
32NB and Rods 12mm made to order
straight or raking*



PIPE

6.5m or cut-to-length (\$) available

Code	OD
20NBX6.5-GMPE	27
25NBX6.5-GMPE	34
32NBX6.5-GMPE	42
40NBX6.5-GMPE	48
50NBX6.5-GMPE	60



